

Map 1 Existing Land Use Greenland, New Hampshire

February, 2006

Legend

- Residential
- Industrial/Commercial
- Mixed Urban
- Transportation
- Playing Fields/Recreational
- Agriculture
- Farmsteads
- Forested
- Water
- Open Wetlands
- Idle/Other
- pbnh Polygon

BASE FEATURES

- | Roads by Legislative Class | Political Boundaries | Surface Water Features |
|-----------------------------------|----------------------|-------------------------|
| Class I - Primary System | State Boundary | Stream, Shoreline |
| Class II - Secondary System | County Boundary | Intermittent Stream |
| Class III - State Recreational | Town Boundary | Apparent Wetland Limit |
| Class IV - within Compacts | | Other Water Feature |
| Class V - Municipal | Railroads | Bodies of Water |
| Class VI - Unmaintained Municipal | Major Powerlines | |
| Private | Major Pipelines | Adjacent Municipalities |

This is a static legend for the Rockingham Region. All features may not be present within the extent of this map.

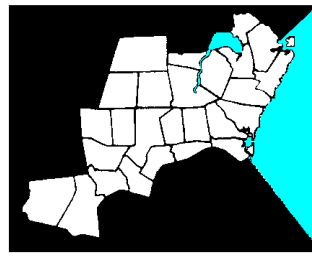
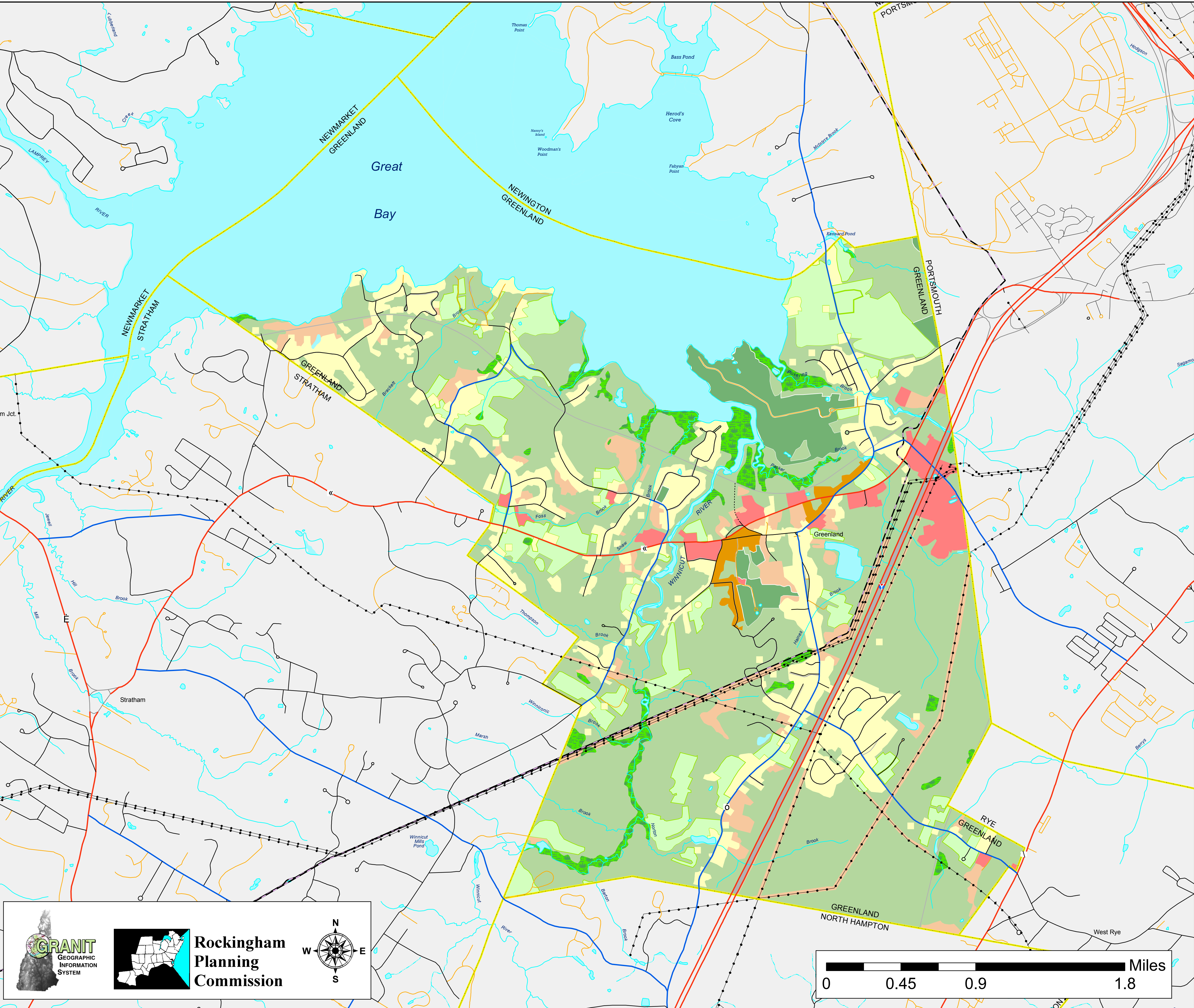
MAP DATA SOURCES

Generalized Land Use information was derived from interpretation of 1992 and 1993, 1:4800 scale aerial photographs produced by The Agricultural Stabilization and Conservation Service. Land Use polygons on this map attempt to show the general 'use' of the land occurring at each location. This information has been processed with 1998 photo based 'Developed Area' (see below) delineations to yield an approximation of the existing Land Use of 1998. This data has not been field tested, and RPC welcomes corrections and input from municipal users.

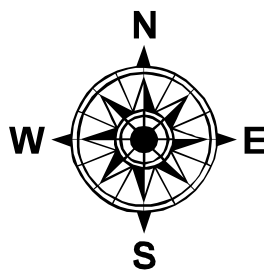
Developed Areas were mapped from manual interpretation of digital orthophotography taken in 1998. Developed areas comprise housing, industrial/commercial areas, parking lots, limited access highways, cemeteries, athletic fields, campgrounds, junk yards etc. Data automation and interpretation performed by GRANIT, Complex Systems Research Center, Durham, NH. Data completed July 2002.

Base Features
Base features (transportation, political and hydrographic) were automated from the USGS Digital Line Graph data, 1:24,000, as archived in the GRANIT database at Complex Systems Research Center, Institute for the study of Earth, Oceans and Space, University of New Hampshire, Durham, NH: 1992-1999. The roads within the Rockingham Planning Region have been updated by Rockingham Planning Commission and by NH Department of Transportation through ongoing efforts.

NOTE: Base features for areas surrounding the Rockingham Region may be shown on this map. These features were automated from USGS 1:100,000 scale digital data sources. This information was provided for reference only. RPC makes no claim to its completeness or accuracy.



Rockingham
Planning
Commission



0 0.45 0.9 1.8 Miles